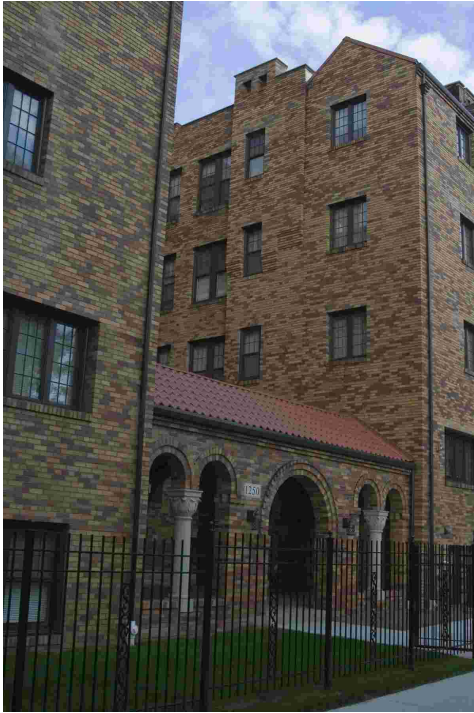


Whitdel Wins Award for Community Impact



The front entrance of Whitdel apartment building

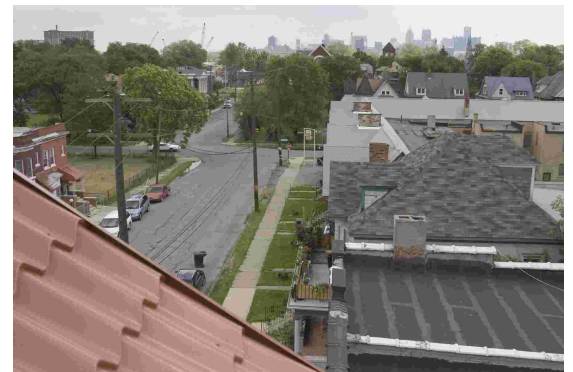
Southwest Housing Solutions' Whitdel apartment building has won a CREW Detroit 2008 Impact Award because of its significant positive impact on the neighborhood surrounding the

Whitdel in southwest Detroit. A seven-judge panel convened by the Detroit chapter of Commercial Real Estate Women (CREW Detroit) selected the Whitdel for the Special Impact Award, which honors a development project smaller than 50,000 square feet. The award was announced on September 2. Development projects competing for the CREW Awards were judged on three major criteria: improving the surrounding community; creatively using current materials, space and technology; and being environmentally friendly.

"The CREW Impact Award honors the talented and dedicated team that restored the historic Whitdel building," said Tim Thorland, executive director of Southwest Housing Solutions. "From concept to completion, the attention to architectural details, satisfying our

tenants, and serving the community at large was meticulous."

The \$5.75-million renovation of the Whitdel began in October 2006 and was finished in December 2007. The first tenants moved into the building soon thereafter. The Whitdel offers affordable housing in 32 beautifully renovated apartment units, an elegant lobby, art gallery space, ceramics rooms, a computer lab, a multi-purpose classroom, and many other features to foster an inviting and creative environment.



A view of the surrounding neighborhood from the Whitdel roof